

SD700 Series

Handheld Contact to Middle Range Linear Imager
Bar Code Scanner

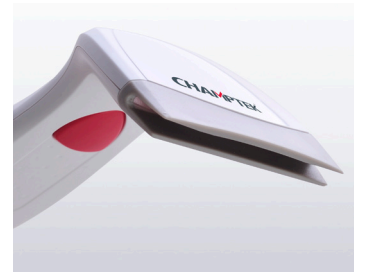


Introduction

SD700 is a brand new ultra slim Handheld linear imaging contact reader represents for customers who require a cost-effective solution for close contact to middle range bar code reading without sacrificing quality and performance. Aside from the characteristics of “high performance, high sensitivities and high stability” inherited from Champtek previous products, SD700 provides the guarantee of excellent reading performance on virtually all linear bar codes, including damaged or poorly printed codes.

It is designed as ultra slim shape, lightweight and low energy consumption, In performance, it can read 8cm bar code at contact window and up to 10cm reading depth with scan speed up to 200 scans per second, which benefits the user when reading standard or wide bar codes. The SD700 reader is available be used as triggerless readers, by simply disabling the trigger with a configuration setting.

SD700 provides a complete all in one multi-interface solution, including RS-232, USB, Keyboard Wedge. It is absolutely the best choice for retailers using POS or regular cash register system.

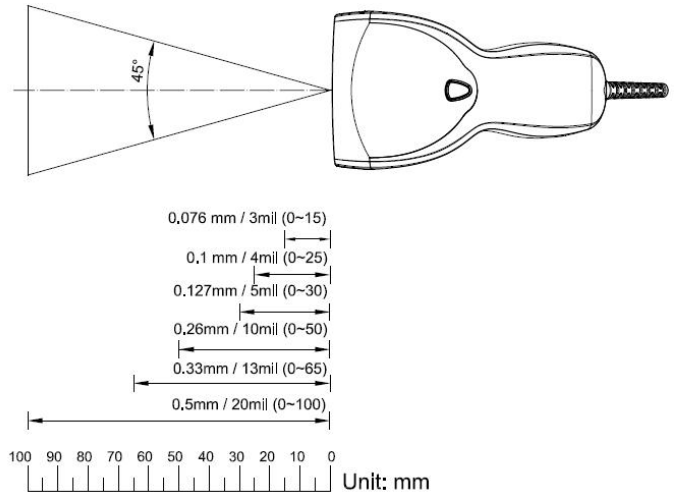


CHAMPTEK[®]
We value your ID's

www.champtek.com

Features

- Ultra slim handle, lightweight and low energy consumption
- Reading 8cm barcode at windows and reading depth up to 10cm
- Support minimum resolution 3 mil/0.076 mm
- Multiple Interface options, USB / RS-232 / Keyboard Wedge
- Supports GS1 DataBar™ linear codes



Specifications

Physical Characteristics

Body weight	Approx. 85g / 3oz (w/o cable)
Material	ABS and Rubber
Dimension (WxHxL)	79 X 45 X 157 mm
Color available	White and black

Performance

Light Source	Visible Red Light 632nm LED
Sensor	Linear CCD Sensor
Processor Type	32-bit
Operating Freq.	8 MHz (Internal)
Scan Speed	200 scans per second ±10%
Depth of Field	Up to 100mm@20mil, PCS90%, Code39
Width of Field (Window)	80 mm at window
Print Contrast Ratio	30%
Resolution	3mil /0.076mm@PCS90%
Ambient Light	20,000 Lux Max
Reading Angle	Test Conditions : Code 39, 10mil/0.25mm, PCS 90%
Forward & Backward	±10°~30° (±5°)
Left & Right	± 60° (±5°)

Environmental

Operating Temperature	0°C to 50°C (32°F to 122°F)
Storage Temperature	-20°C to 70°C (-4°F to 158°F)
Relative Humidity	20% to 95% (Non-condensing)

Reliability

Life Time

Trigger Switch	1,000,000 times
MTBF(Calculated)	50,000 hours

Thermal Shock

High Temp.	60°C (140°F)
Low Temp.	-20°C (-4°F)
Cycle time	20 minutes for high temp. , 20 minutes for low temp.
Cycles	5 cycles

Cable Bending Test	25,000 times/ minimum (30 times/ min @ 500g/ 90°)
--------------------	--

Drop	47.24 inches (120cm) drop on Concrete Surface
------	--

Symbologies

Automatically discriminates major standard 1D bar codes, include GS1 databar - Omnidirectional, Expanded and Limited

CE, FCC and RoHs compliant 

Due to Champtek's / Scantech ID's continuing product improvement programs, specifications and features are subject to change without notice.